



TMS-SA

# TMS-SA

The TMS-SA is a compact, autonomous and portable microwave traffic analyser designed for temporary surveys. Using a Doppler radar, it counts the vehicles and measure their speed and discriminates personal cars from trucks and buses. Its simple and complete software allows to set the radar, and to download and easily process the traffic data.

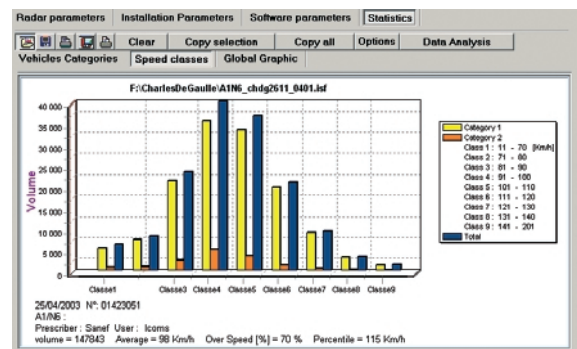
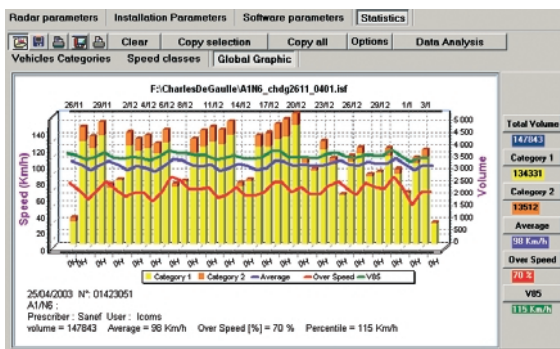
## Comfort

- > Memorization of up to 250 000 vehicles (date, hour, speed, length)
- > Universal mounting system at the rear
- > Fully self-contained
- > Differed start/stop setting
- > Weather insensitivity
- > Noiseless



## Safety

- > Almost invisible with no influence on drivers' behaviour
- > No contact with vehicles
- > Installation without risk nor disruption to traffic





## •>>> User friendly

- > Ergonomical screens, practical software
- > Clear datas, complete, accurate and easy to read
- > Some "clicks" and your statistics are there

## •>>> Settings

- > Start/stop
- > Length classes : 2
- > Speed classes : 9

## •>>> Standards

- > ISO 9001 version 2000
- > CEE (electromagnetic compatibility and electrical safety)

## •>>> Technical data

Speed range	From 10 to 255 km/h
Accuracy	Speed : 99 % Counting : 98 % Length : 90 %
Operating temperature	From - 25°C to + 65°C
Power supply	6 V (lead battery)
Power consumption	8-12 mA while measuring, 18 mA in setting mode
Autonomy	+/- 500 h
Size of memory	250 000 vehicles
Frequency	K Band (24.1250 GHz)
Transmission power	5 mW
Max. dimensions	300 x 245 x 340 mm, mounting system included
Weight	7,5 kg (including battery and mounting system)
Degree of protection	IP67
User output	RS232 Visualisation led for detection
Mounting system	4 points on rear face for M8 bolts insertion
Software :	
Environment	Windows 98 or higher, minimum 32 MB RAM
Disk space requirement	20 MB
Language choice	French, dutch, english

